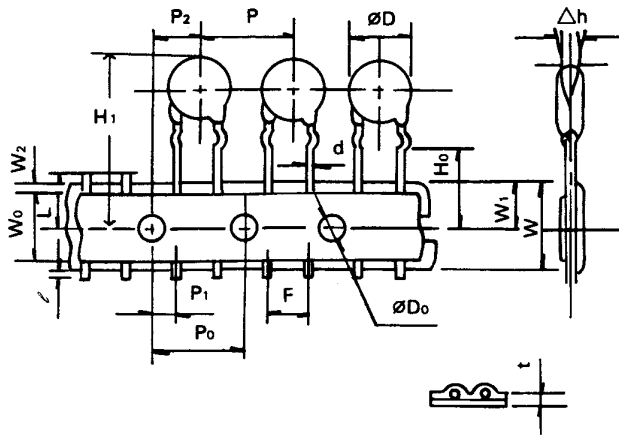




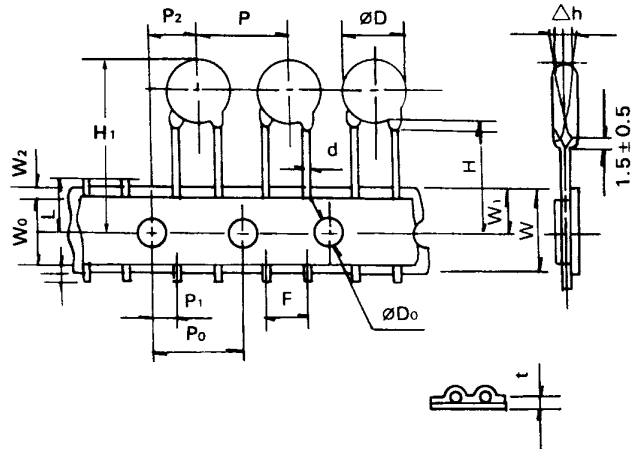
# TRANSIENT/SURGE ABSORBER TRANSIENT VOLTAGE SURGE SUPPRESSORS

## Radial Leads Taping Specifications

### 1. Crimped Leads



### 2. Straight Leads



Unit: mm

Item	Parameter	05D Series	07D Series	10D Series	14D Series
P	Pitch of component	12.7± 1.0	12.7± 1.0	12.7± 1.0	25.4± 1.0
P0	Feed hole pitch	12.7± 0.2	12.7± 0.2	12.7± 0.2	12.7± 0.2
P1	Feed hole center to lead	3.85± 0.7	3.85± 0.7	2.6± 0.7	2.6± 0.7
P2	Hole center to component center	6.35± 0.7	6.35± 0.7	6.35± 0.7	6.35± 0.7
F	Lead-to-lead distance	5.0± 0.8	5.0± 0.8	7.50± 0.8	7.50± 0.8
Δh	Component alignment	2.0 max	2.0 max	2.0 max	2.0 max
W	Tape width	18.0+1.0/-0.5	18.0+1.0/-0.5	18.0+1.0/-0.5	18.0+1.0/-0.5
W0	Hold-down tape width	16.0± 0.3	16.0± 0.3	16.0± 0.3	16.0± 0.3
W1	Hole position	9.0+0.75/-0.5	9.0+0.75/-0.5	9.0+0.75/-0.5	9.0+0.75/-0.5
W2	Hole-down tape position	0.5 max.	0.5 max.	0.5 max.	0.5 max.
H	Height of component from Tape center	18.0+2.0/-0	18.0+2.0/-0	18.0+2.0/-0	18.0+2.0/-0
H0	Seating plane height	16.0± 0.5	16.0± 0.5	16.0± 0.5	16.0± 0.5
H1	Component height	29.0 max.	32.0 max.	36.0 max.	40.0 max.
ℓ	Lead-wire protrusion	2.0 max.	2.0 max.	2.0 max.	2.0 max.
D0	Feed hole diameter	4.0± 0.2	4.0± 0.2	4.0± 0.2	4.0± 0.2
t	Total tape thickness	0.7± 0.2	0.7± 0.2	0.7± 0.2	0.7± 0.2
L	Length of clipped lead	11.0 max.	11.0 max.	11.0 max.	11.0 max.